

ACCIDENT

involving the motorised glider registered PH-780

PH-780 OF 11 JULY 1999

Event:	Collision with trees during initial climb.
Identified cause:	Attempted takeoff with inappropriate propeller blade pitch setting.

Consequences and damage:	Pilot and passenger killed, aircraft destroyed.
Type of aircraft:	Hoffmann H 36 Dimona, two-seat motorised glider.
Date and time:	Sunday 11 July 1999 at 13 h 00.
Owner:	Club.
Place:	Joigny AD (89).
Type of flight:	Travel.
Persons on board:	Pilot + 1.
Licenses and experience:	Dutch pilot, 26, experience and qualifications unknown.
Meteorological conditions:	Estimated at the site: north-east wind / 5 to 10 kt, visibility over to 10 km, scattered Cu towards 2000 ft, temperature 26 °C, humidity 64%.

Circumstances

Coming from Montargis, the pilot landed at Joigny. Witnesses outside the AD saw it take off again from runway 08. They saw the aircraft fly over an electric cable by a few metres then fly over the forest at a low height. According to the witnesses, the motorised glider then oscillated on the roll axis before crashing into the trees. It caught fire immediately.

Examination of the wreckage showed that the propeller blades were set on "high pitch". The aircraft's flight manual specified that takeoffs, landings and go-arounds must be performed with the propeller blades set at "low pitch".

Due to ground effect, the aircraft was able to take off despite the low pitch propeller setting, inappropriate for low speeds. However, this configuration did not permit acceleration towards the first flight regime, especially as the aircraft had to cross an electric line. The high temperature, that reduced engine power, and possible downdraughts above the forest increased the power required for flight could have contributed to the loss of control.

ATTERRISSAGE A VUE Visual landing

Ouvert à la CAP
Public Air Traffic

01 JOIGNY LFGK

01 03 22

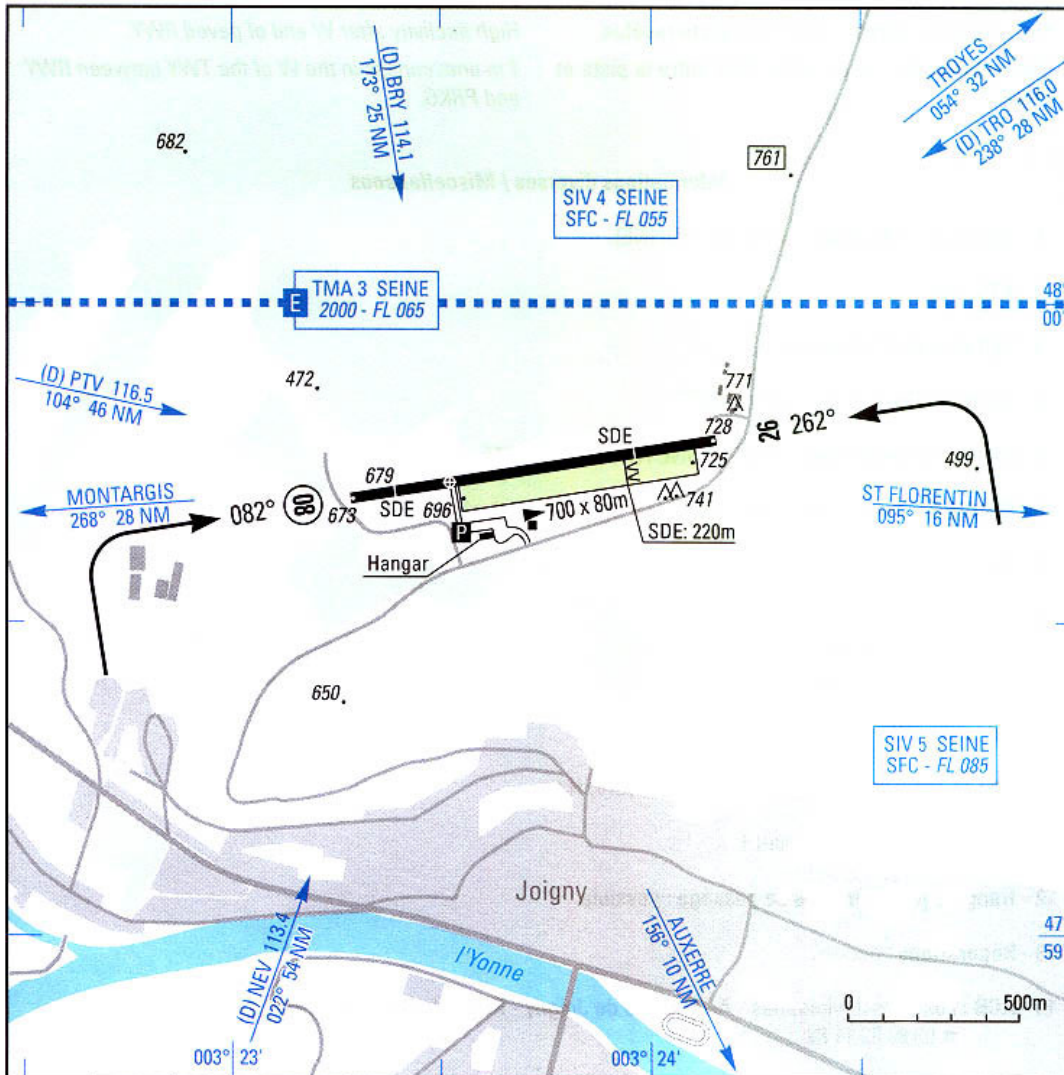
Non WGS-84
ALT en ft
ALT AD : 728 (26 hPa)

LAT : 47 59 42 N
LONG : 003 23 31 E
DEC 2° W (95)



APP : NIL

TWR : NIL



RWY	QFU	Dimensions Dimension	Nature Surface	Résistance Strength	TODA	ASDA	LDA
08 26	082 262	1070 x 30	Revêtu Paved	5 / - / -	1070 1070	1070 1070	940 845

Aides lumineuses : NIL

Lighting aids : NIL



AMDT 04/01 CHG: SIV SEINE.

© SIA